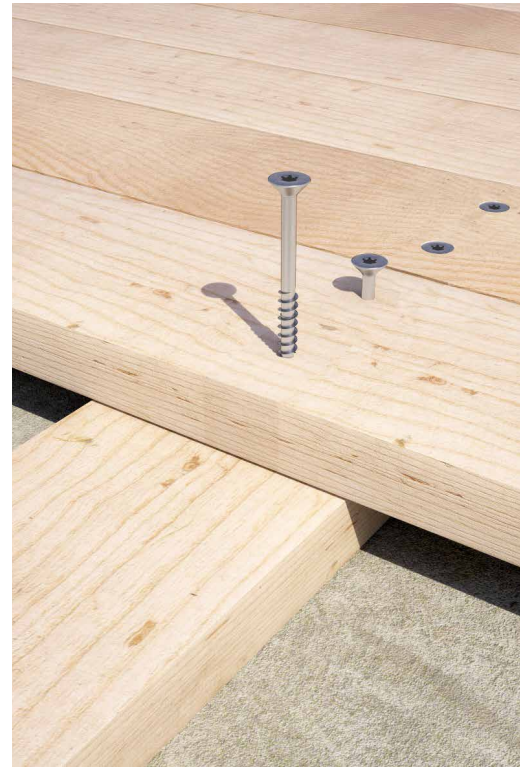


SCA-HT

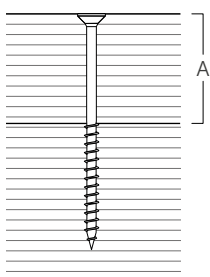
SCREW WITH COUNTERSUNK HEAD

- Simple geometry, optimised to provide good performance at a low cost
- Smooth under-head ideal for fastening stainless steel clips and hinges
- Use in aggressive outdoor environments. Suitable for service classes 1-2-3
- Application on timber boards with density of < 470 kg/m³ (without pre-drilling hole) and < 570 kg/m³ (with pre-drilling hole)

MATERIAL: A2 | AISI304 austenitic stainless steel



A maximum fastening thickness



d ₁ [mm]	d _k [mm]	CODE	L [mm]	b [mm]	A [mm]	pcs
4 TX 20	8,00	SCA440H	40	24	16	200
		SCA450H	50	30	20	200
4,5 TX 20	9,00	SCA4550H	50	30	20	200
		SCA4560H	60	36	24	200
5 TX 25	10,00	SCA550H	50	30	20	200
		SCA560H	60	36	24	200
		SCA570H	70	42	28	200
		SCA580H	80	48	32	100

SCA-HT BUCKET

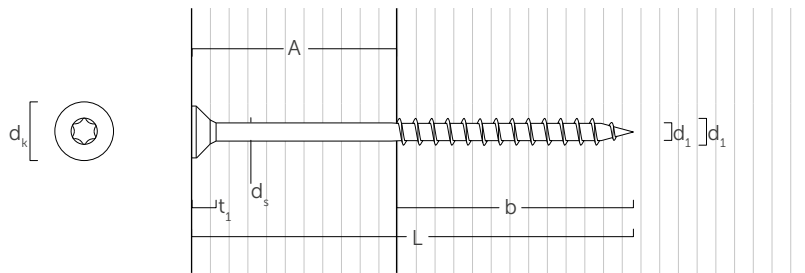
SCREWS IN BUCKET 1000

- Practical version with 1000 pieces per package
- Packaging that guarantees durability even in rainy conditions
- PET plastic box, durable, impact-resistant and reusable



d ₁ [mm]	d _k [mm]	CODE	L [mm]	b [mm]	A [mm]	pcs
5 TX 25	10,00	SCABUC560H	60	36	24	1000
		SCABUC570H	70	42	28	1000

GEOMETRY



nominal diameter	d_1	[mm]	4	4,5	5
head diameter	d_k	[mm]	8,00	9,00	10,00
thread diameter	d_2	[mm]	2,55	2,80	3,40
shank diameter	d_s	[mm]	2,75	3,15	3,65
head thickness	t_1	[mm]	3,80	4,25	4,65
pre-drilling hole diameter ⁽¹⁾	d_v	[mm]	2,50	3,00	3,00

⁽¹⁾For high density materials, pre-bored holes are recommended based on the wood species.