

# SILENT WALL MASS

## SOUNDPROOFING AND WATERPROOFING BITUMINOUS FOIL

### MASS

Thanks to its high density (6 kg/m<sup>2</sup>), excellent reduction of airborne noise can be achieved with minimal thicknesses.

### PRACTICAL

Through mechanical fastening, the product can be applied to any surface, compensating for irregularities.

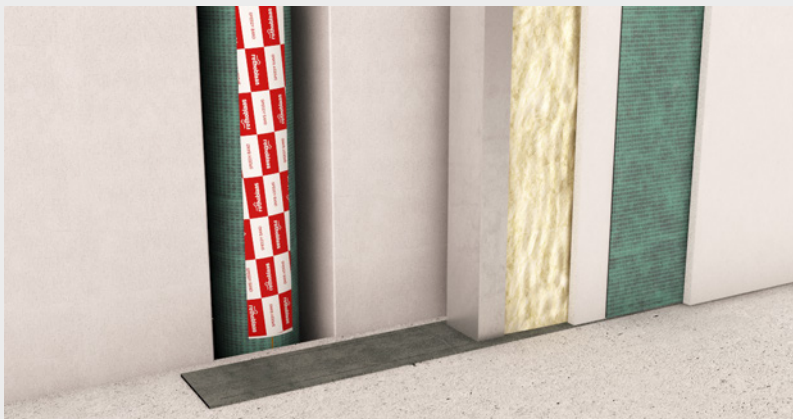
### COST/PERFORMANCE

Composition of the mixture optimised to provide both good performance and low cost.



## CODES AND DIMENSIONS

code	g/m <sup>2</sup>	H x L [m]	s [mm]	A [m <sup>2</sup> ]	pcs. / b
SILENTWALLM	6000	1,2 x 5	4,0	6	30



## < VERSATILE

The format and composition allow to use this product in all situations that require an increase in the mass of surfaces.

## MATERIAL

Single-layer elastoplastomeric bitumen, covered on both sides with a polypropylene non-woven fabric. Does not contain harmful substances.

## TECHNICAL SPECIFICATIONS

Property	Standard	Value
Thickness	-	4 mm
Mass per unit area	-	6 kg/m <sup>2</sup>
Apparent dynamic stiffness s't	-	60 MN/m <sup>3</sup>
Theoretical estimate of the soundproofing power of a single sheet	-	24 dB
Compressibility	EN 12341	≤ 2 mm
Thermal conductivity (λ)	-	0,04 W/mK
Water vapour transmission (Sd)	-	80 m
Water vapour resistance factor (μ)	-	20000
Temperature resistance	ISO 6946	0,1 m <sup>2</sup> K/W

## APPLICATION INSTRUCTIONS

